

RICHMOND YARDS

TOWNHOUSE CLIFTON GREEN

TOWNHOUSE TOTAL: 1743 SQFT

LEVEL 1

FLOOR AREA: 567 SQFT

TERRACE: 118 SQFT

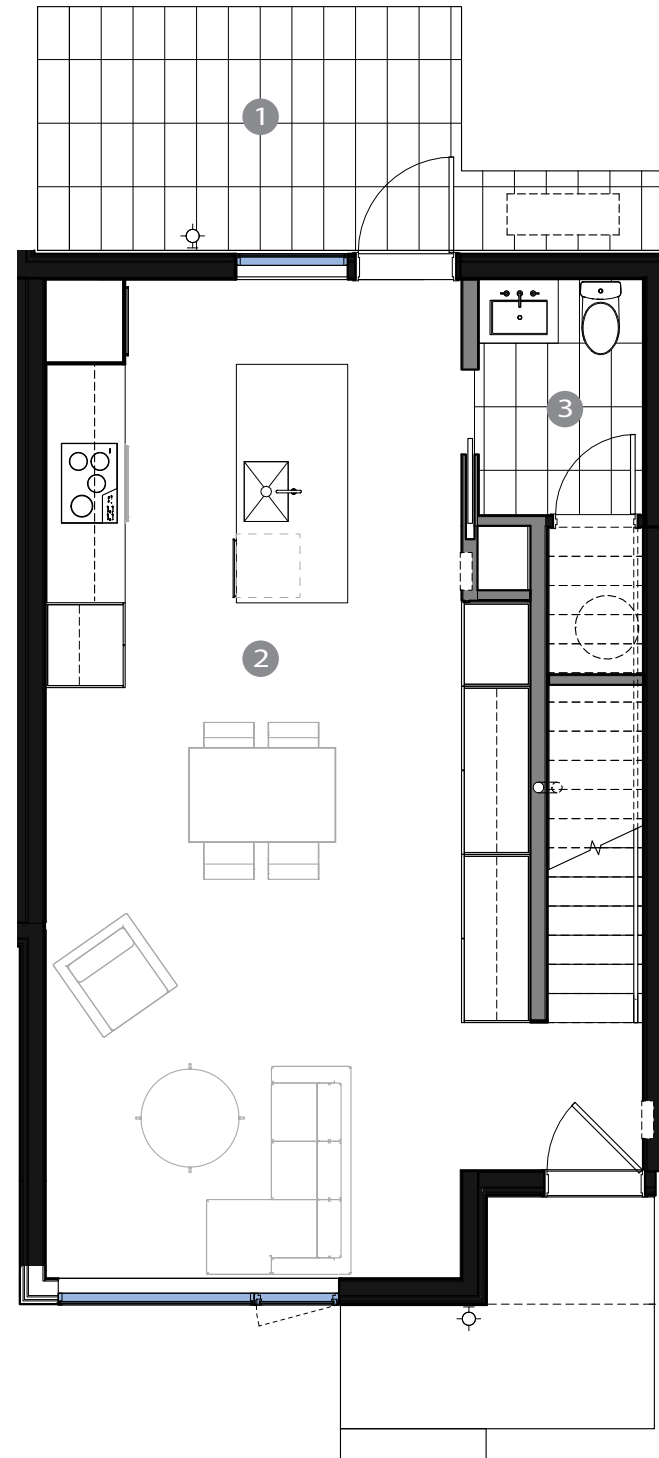
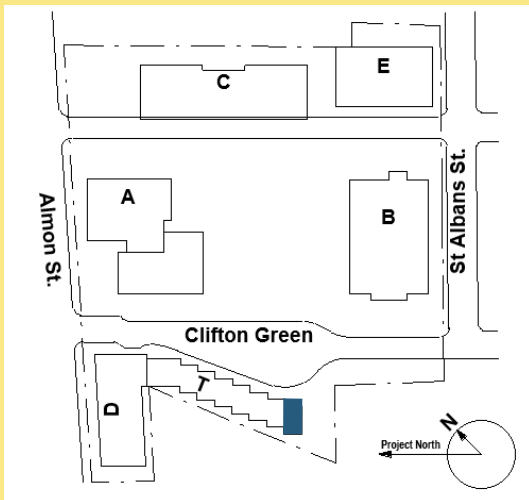
TOTAL: 685 SQFT

1 PATIO 13'-4" X 7'-8"

2 LIVING ROOM: 13'-0" X 31'-5"

3 BATHROOM 1: 5'-2" X 7'-5"

SITE MAP



LEVEL 1

RICHMOND YARDS

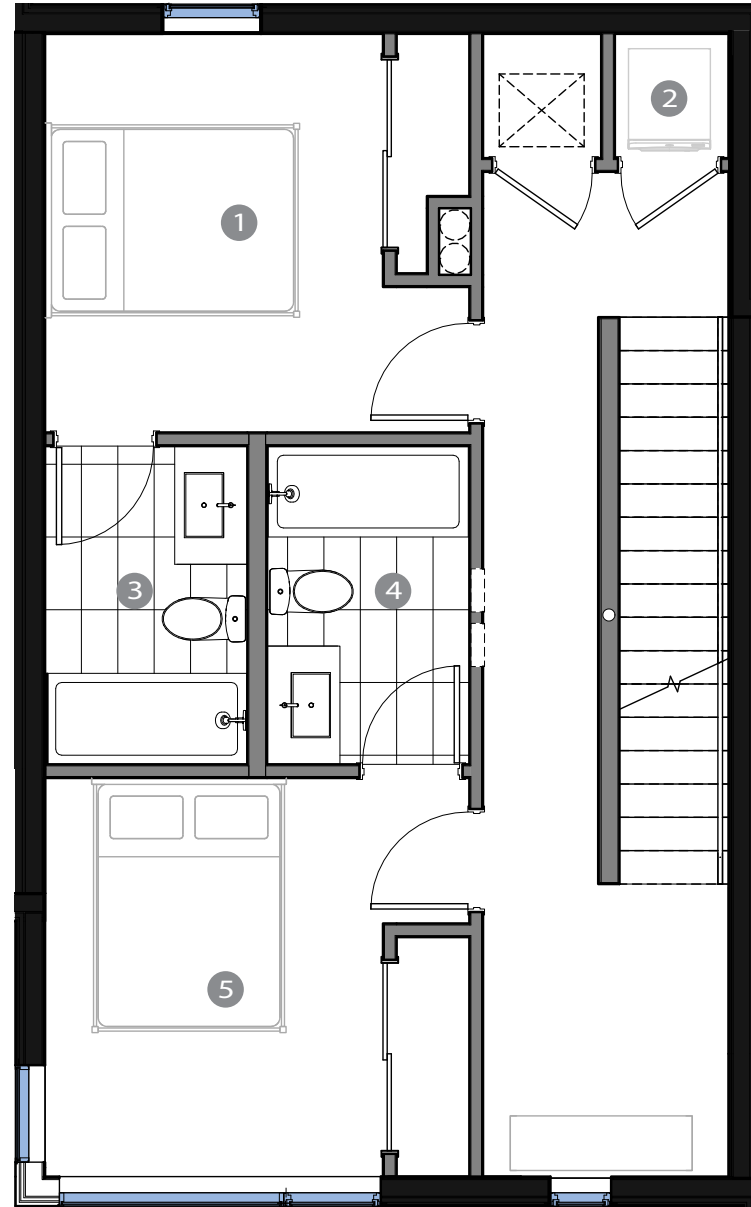
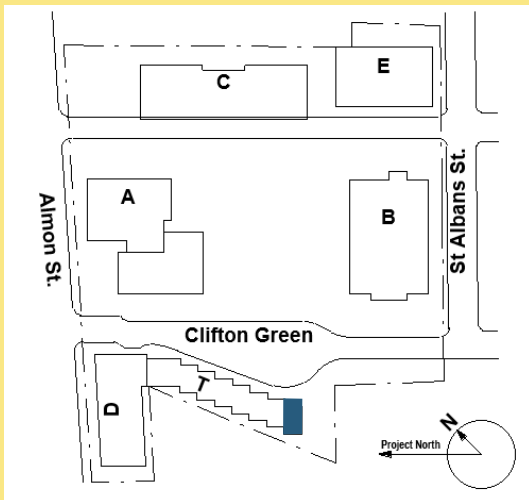
TOWNHOUSE CLIFTON GREEN

TOWNHOUSE AREA: 1743 SQFT

LEVEL 2
FLOOR AREA: 588 SQFT

- 1 BEDROOM 1: 9'-3" X 10'-11"
- 2 LAUNDRY: 3'-1" X 3'-5"
- 3 BATHROOM 2: 5'-6" X 8'-9"
- 4 BATHROOM 3: 5'-7" X 8'-9"
- 5 BEDROOM 2: 9'-3" X 10'-11"

SITE MAP



LEVEL 2

RICHMOND YARDS

TOWNHOUSE CLIFTON GREEN

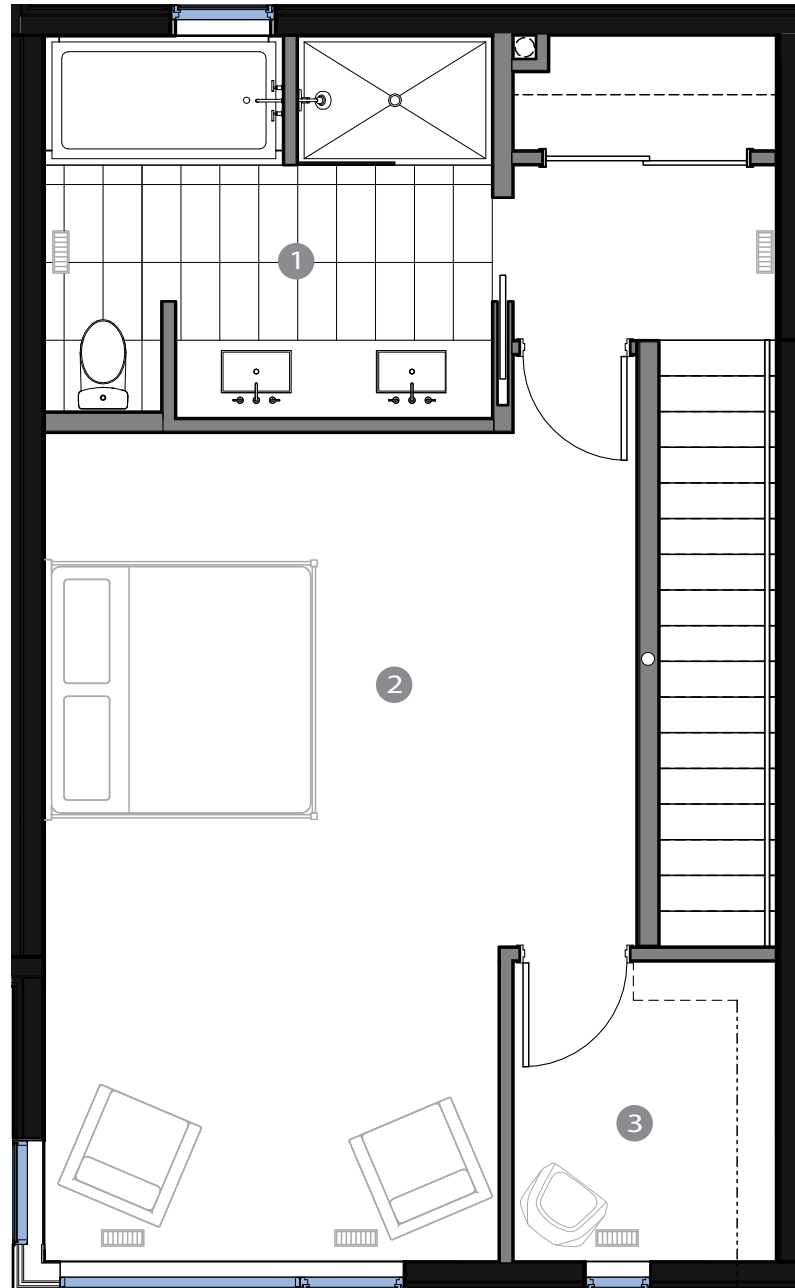
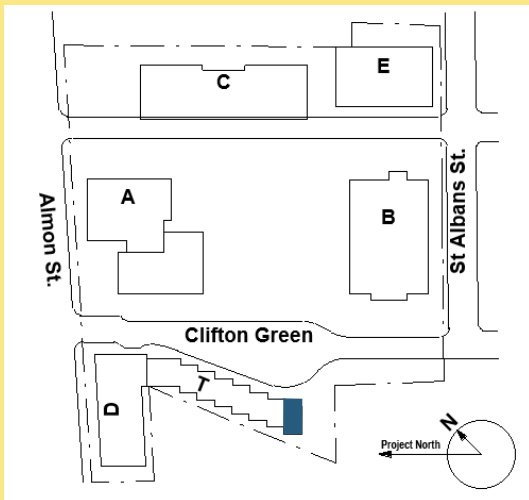
TOWNHOUSE AREA: 1743 SQFT

LEVEL 3
FLOOR AREA: 588 SQFT

1 BATHROOM 4: 11'-6" X 9'-10"
2 BEDROOM 3: 11'-8" X 21'-3"
3 WALK IN CLOSET: 6'-9" X 7'-8"



SITE MAP



LEVEL 3